

Exploring
Equity
Through
Meaningful
Text Pairings

Katie Whitley
Bergen County
Technical High School
katwhi@bergen.org

Ashley Rillo
Ridgewood
High School
arillo@ridgewood.k12.nj

Session Objective

To examine how to pair
traditional texts with
modern
“new classics” by analyzing
two related works and
comparing them through
a “one-pager.”

Let's get thinking!

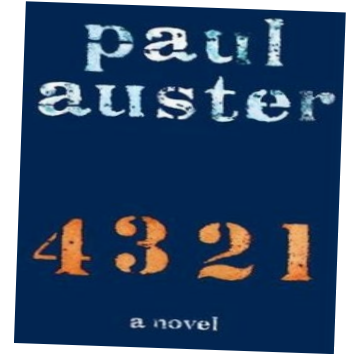


Reflect on your go-to
response when
students ask:

“Why read/learn this?”

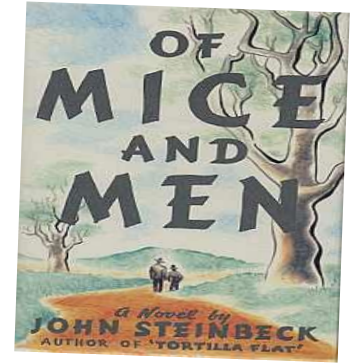
Turn & Talk

What have you read
for yourself recently
that you really
connected with? Why?



Switch, Turn, & Talk

Which authors included in your curriculum do *students* connect to most?



Are they traditional, “new classics,” or a mix?

Something Old & Something New

How do we widen the
c a n o n b y e x p l o r i n g
l i t e r a t u r e t h r o u g h b o t h
t r a d i t i o n a l a n d m o d e r n
l e n s e s ?



Mirrors & Windows



Hacking the Classics



Preparing to Pair

1.

What is the value of this traditional work in a modern context?

2.

What should students know about the traditional work in its own time?

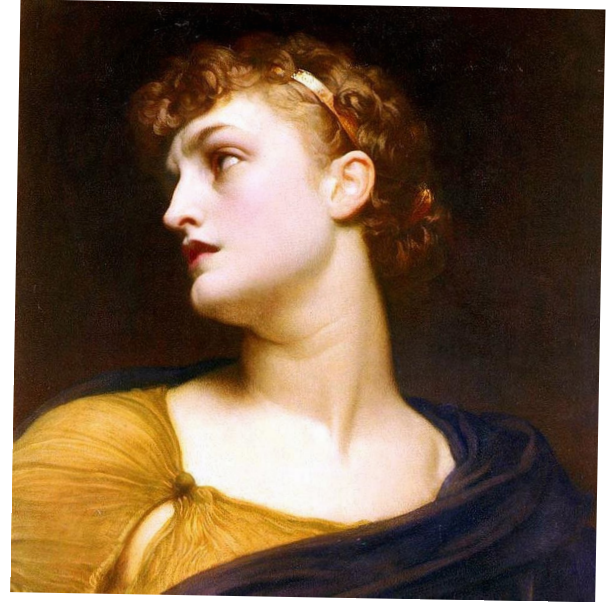
3.

What can be paired to make the traditional work relevant to your students' lives?

Step 1: Preparing to Pair

- x What is the value of this traditional work in a modern context?

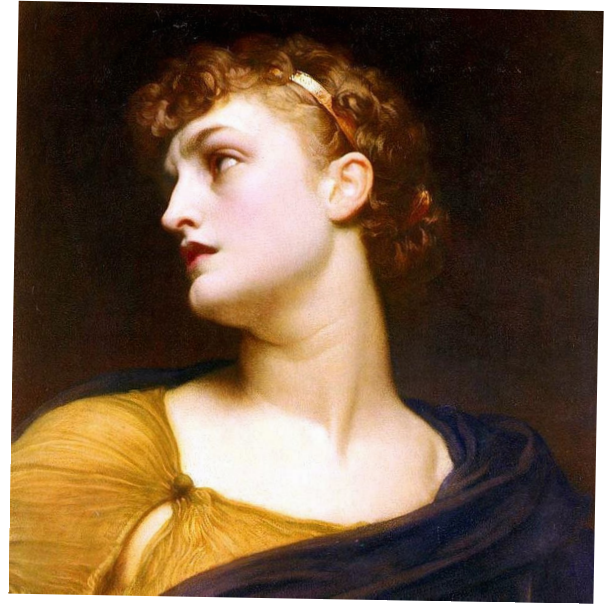
Antigone
by
Sophocles
circa 440 BCE



Step 2: Preparing to Pair

- x What should students know about the traditional work in its own time?

The Greeks
believed that a
body left
unburied will
doom the soul to
wander in the
afterlife.



Step 3: Preparing to Pair

- x What can be paired to make the traditional work relevant to your students' lives?

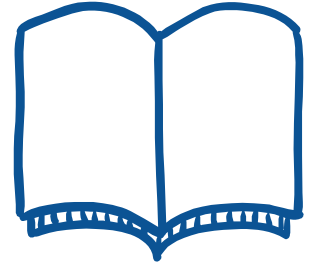
“If We Must Die”
by Claude McKay

Harlem
Renaissance, 1919



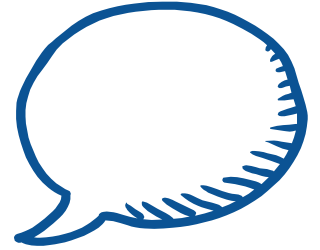
Let's read!

- Excerpt from
Antigone
- ‘If We Must Die’



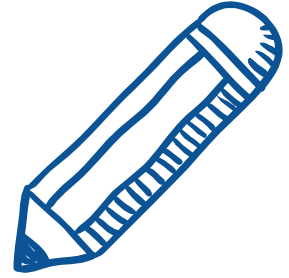
Let's talk!

What are your initial thoughts about the pairing?



Let's make a
one - pager!

- Excerpt from
Antigone
- “If We Must Die”



Let's discuss!

How might “new classics” complement and contextualize traditional texts?



Let's plan!



What new text
pairing can you try
in your curriculum?

Thank you!

Questions?

Katie Whitley
Bergen County
Technical High School
katwhi@bergen.org

Ashley Rillo
Ridgewood
High School
arillo@ridgewood.k12.nj